

# KATALOG STANOVA

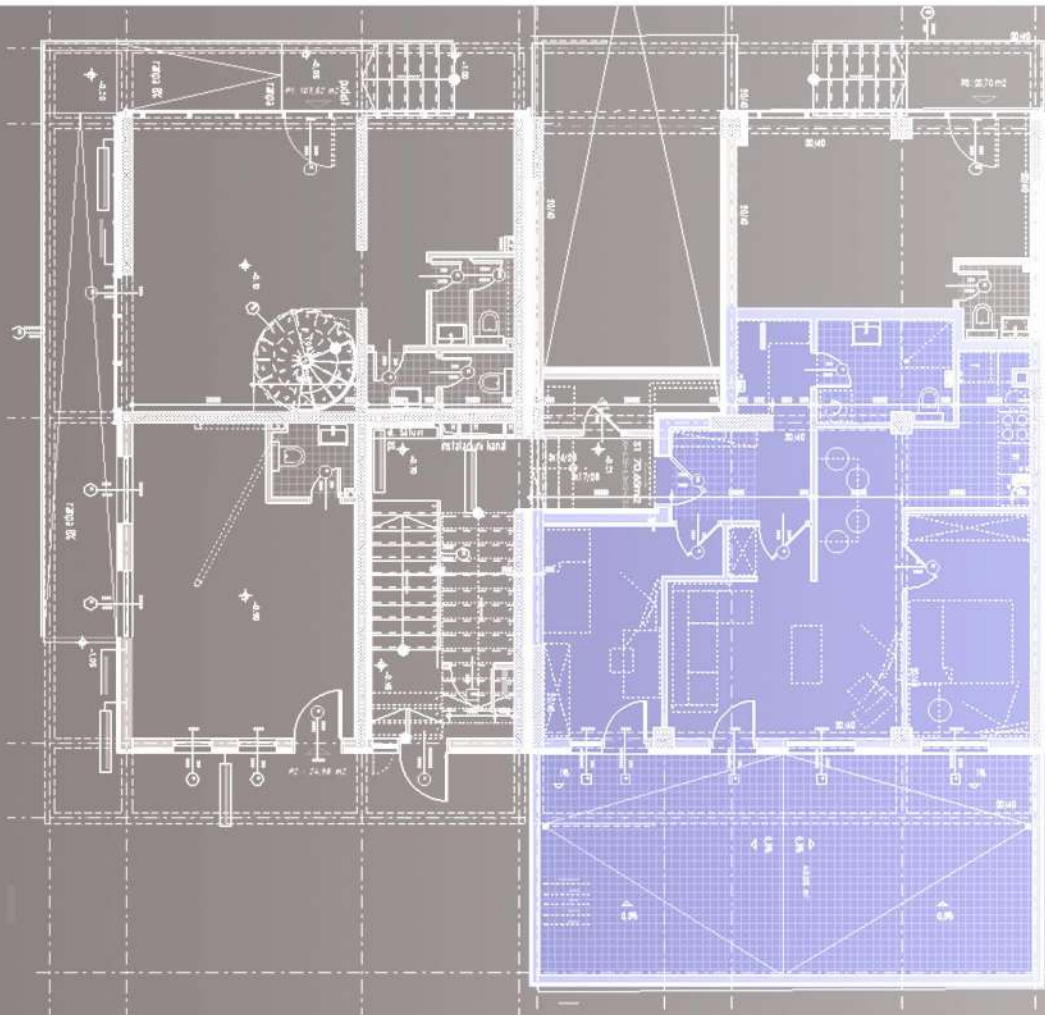


KOLEKTIVNI STAMBENO - POSLOVNI  
OBJEKAT U CERSKOJ ULICI U  
BANJA LUCI

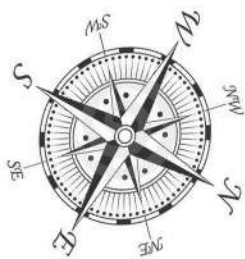
# Trosoban stan - S1 prizemlje

72.46m<sup>2</sup>

osnova peizemlja



## osnova stana S1



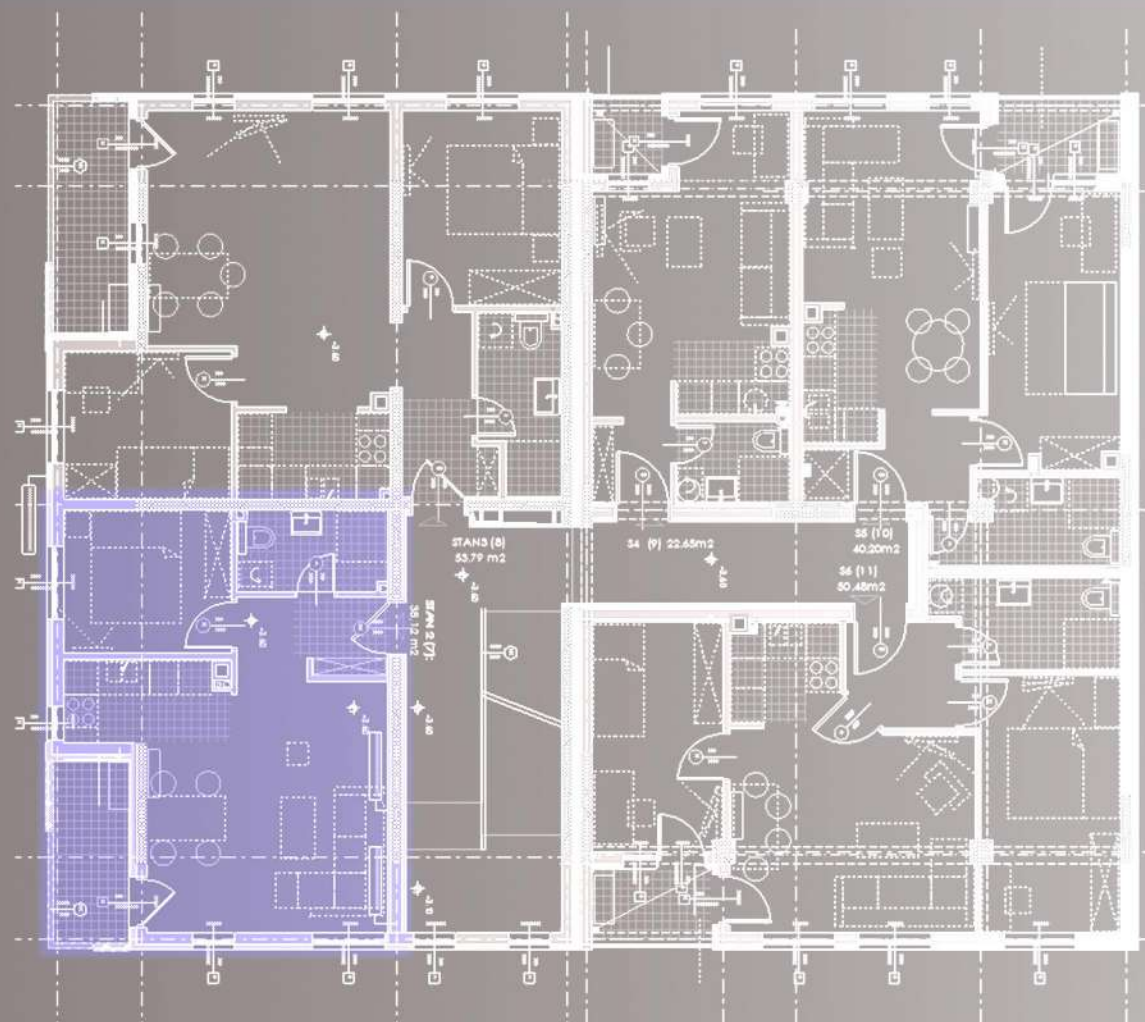
Stan S1 72.46m<sup>2</sup>

1.	Hodnik	7.55
2.	Kuhinja	5.75
3.	Kupatilo	5.20
4.	Soba 1	10.45
5.	Soba 2	10.55
6.	Dn.boravak sa trpezarijom	20.25
7.	Terasa	12.71



Fotorealistični prikaz dnevnog boravka  
i dječije sobe

osnova I i II sprata



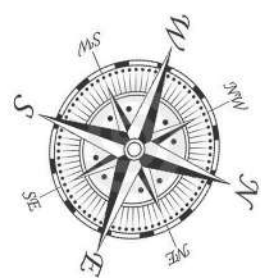
# Dvosoban stan - S2/S7

I i II sprat

39.45m<sup>2</sup>



## osnova stana S2/S7



Stan S2/S7

39.45m<sup>2</sup>

- |    |                              |       |
|----|------------------------------|-------|
| 1. | Hodnik                       | 3.90  |
| 2. | Kuhinja                      | 4.20  |
| 3. | Kupatilo                     | 3.85  |
| 4. | Soba                         | 7.65  |
| 5. | Dn.boravak<br>sa trpezarijom | 17.65 |
| 6. | Balkon                       | 2.20  |



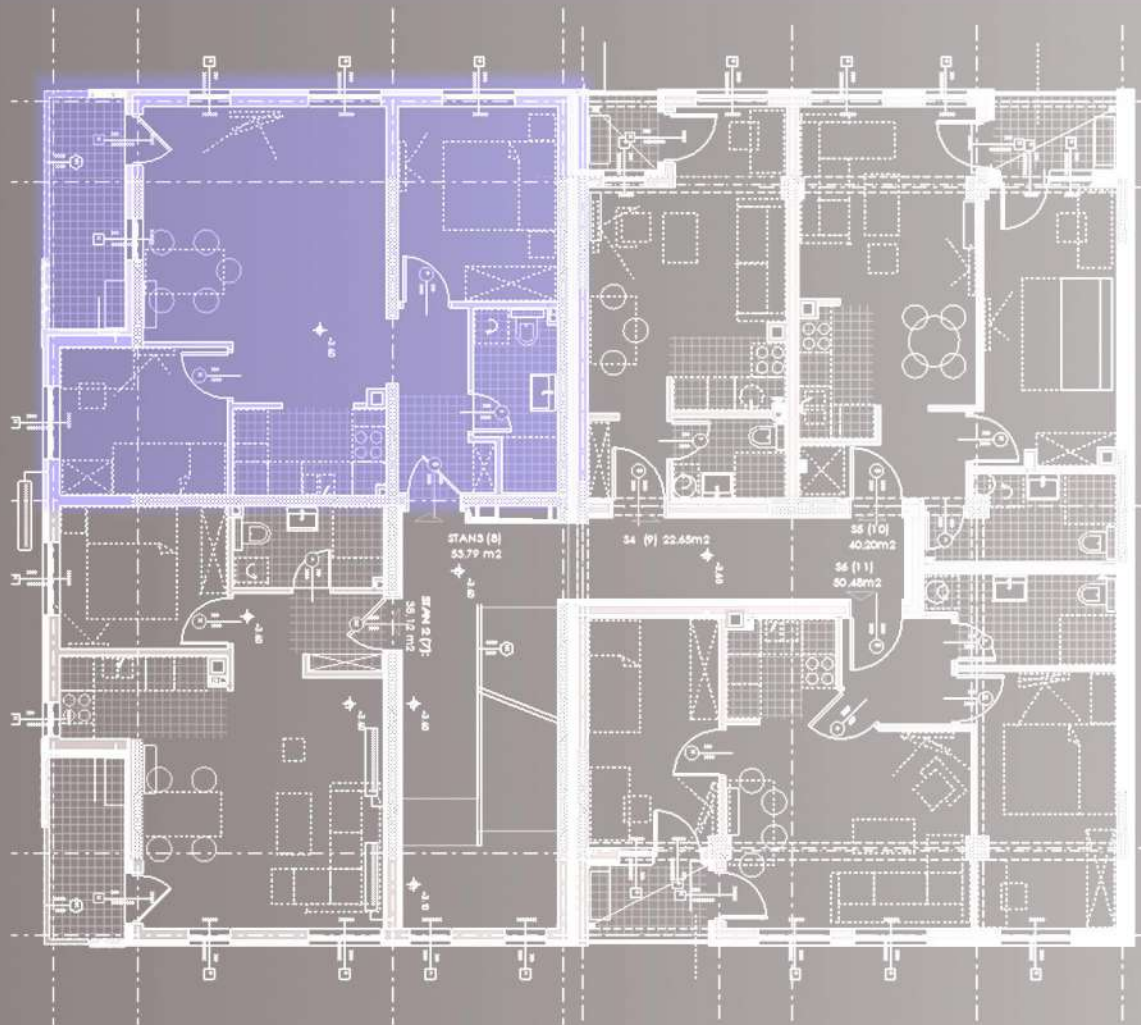
Fotorealistični prikaz dnevnog boravka  
i trpezarije

# Trosoban stan - S3/S8

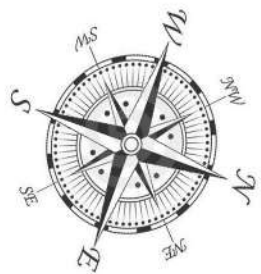
I i II sprat

55.45m<sup>2</sup>

osnova I i II sprata



## osnova stana S3/S8



Stan S3/S8

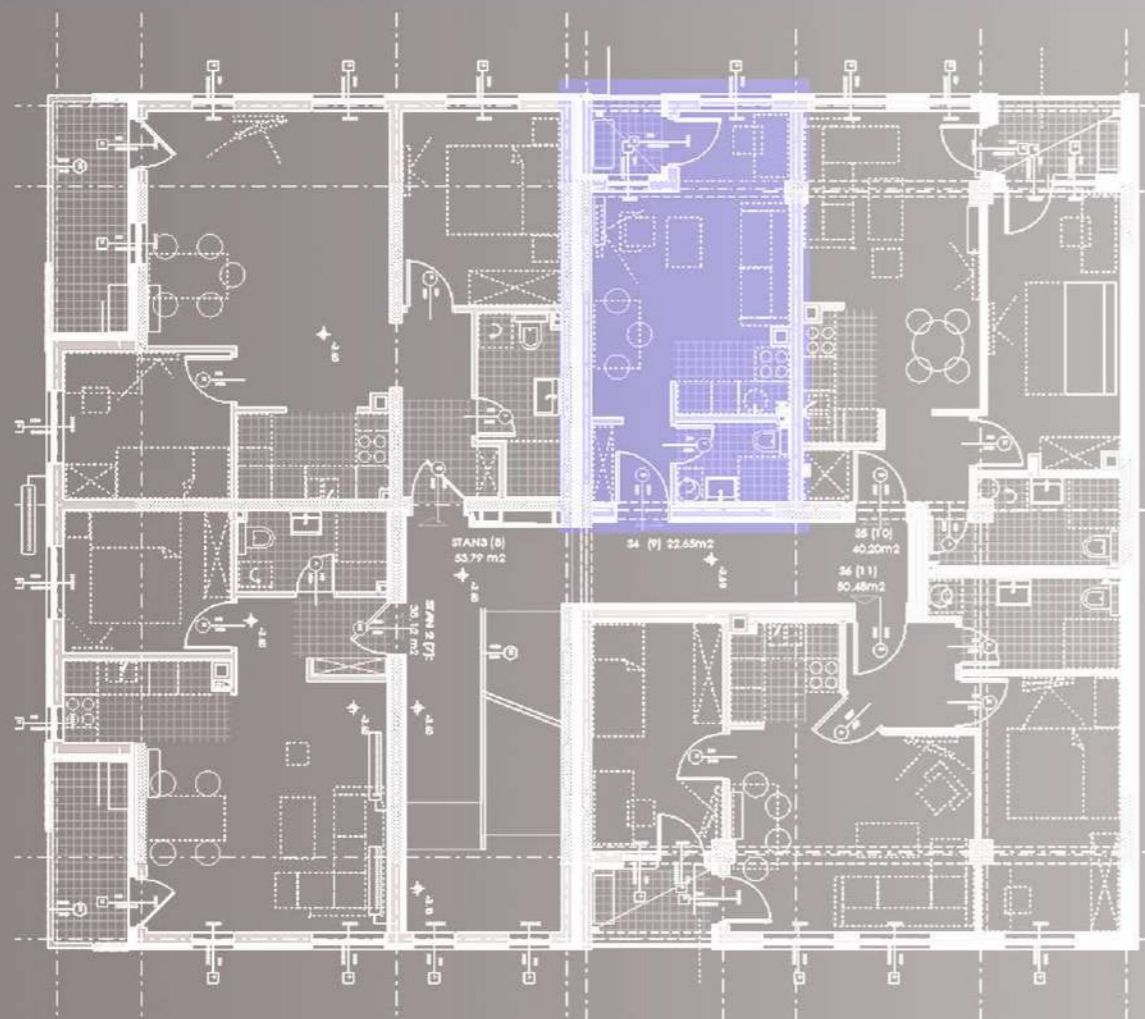
55.45m<sup>2</sup>

- |    |                              |       |
|----|------------------------------|-------|
| 1. | Hodnik                       | 4.65  |
| 2. | Kuhinja                      | 4.20  |
| 3. | Kupatilo                     | 4.40  |
| 4. | Soba 1                       | 7.95  |
| 5. | Soba 2                       | 10.00 |
| 6. | Dn.boravak<br>sa trpezarijom | 21.45 |
| 7. | Balkon                       | 2.80  |



Fotorealistični prikaz dnevnog boravka i dječije sobe.

osnova I i II sprata



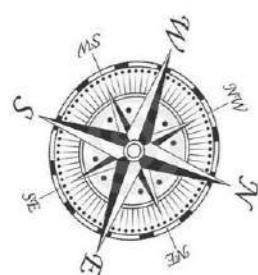
# Garsonjera - S4/S9

I i II sprat

23.30m<sup>2</sup>



## osnova stana S4/S9



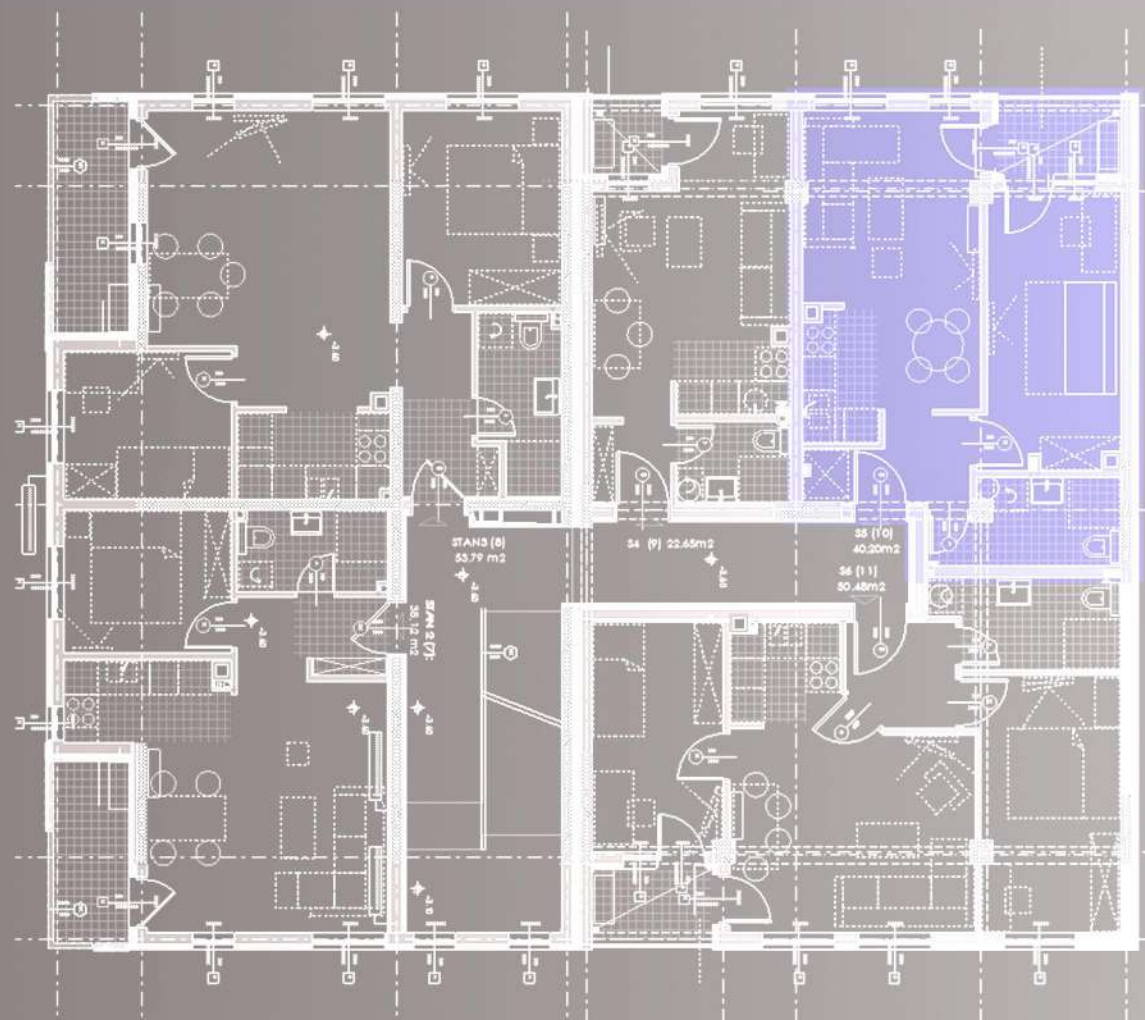
Stan S4/S9 23.30m<sup>2</sup>

- |    |                              |       |
|----|------------------------------|-------|
| 1. | Hodnik                       | 2.05  |
| 2. | Kuhinja                      | 2.75  |
| 3. | Kupatilo                     | 3.00  |
| 4. | Dn.boravak<br>sa trpezarijom | 14.15 |
| 5. | Loda                         | 1.35  |



Fotorealistični prikaz dnevnog boravka  
i trpezarije

osnova I i II sprata



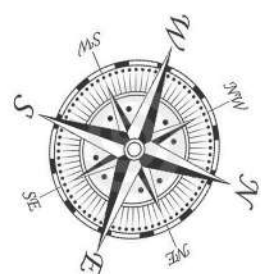
# Dvosoban stan - S5/S10

I i II sprat

40.69m<sup>2</sup>

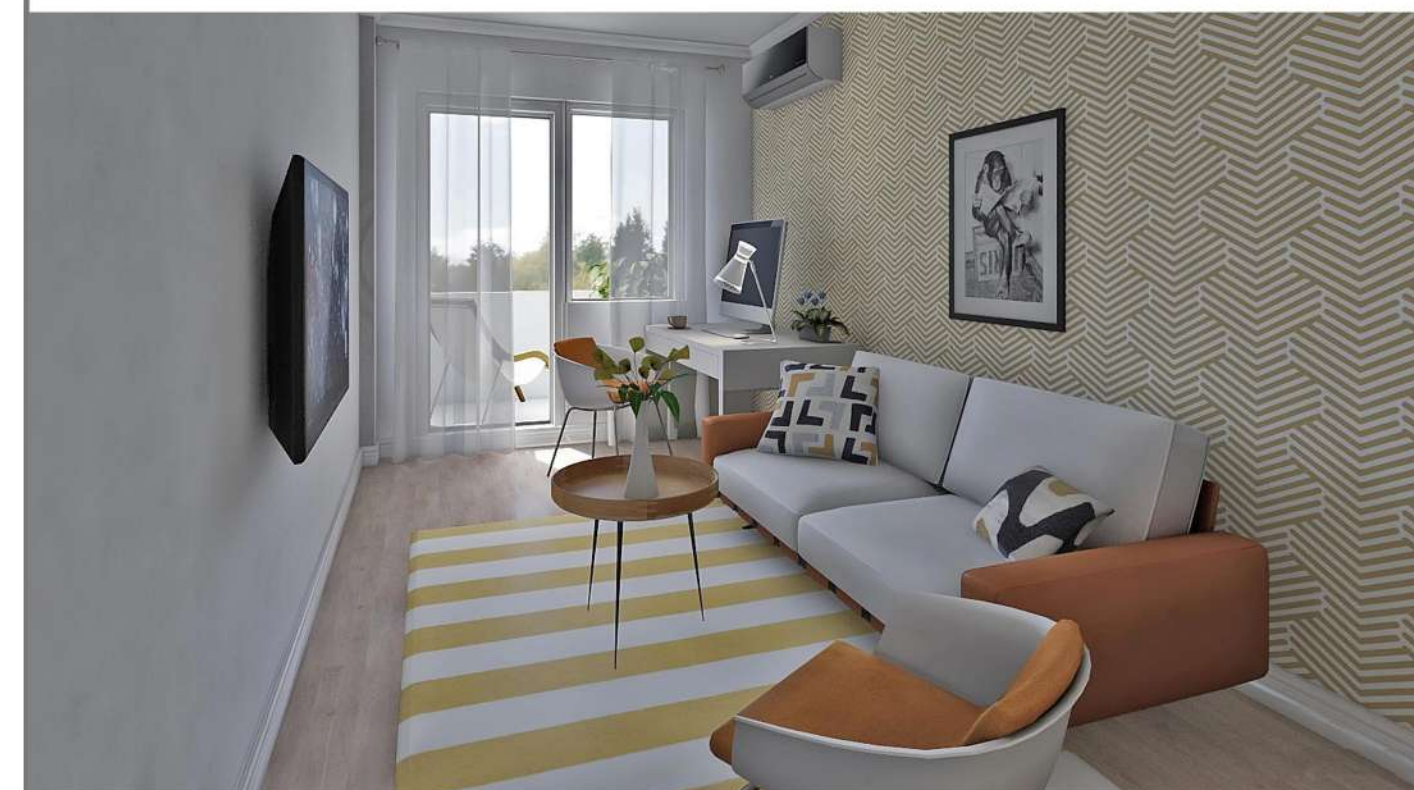


## osnova stana S5/S10



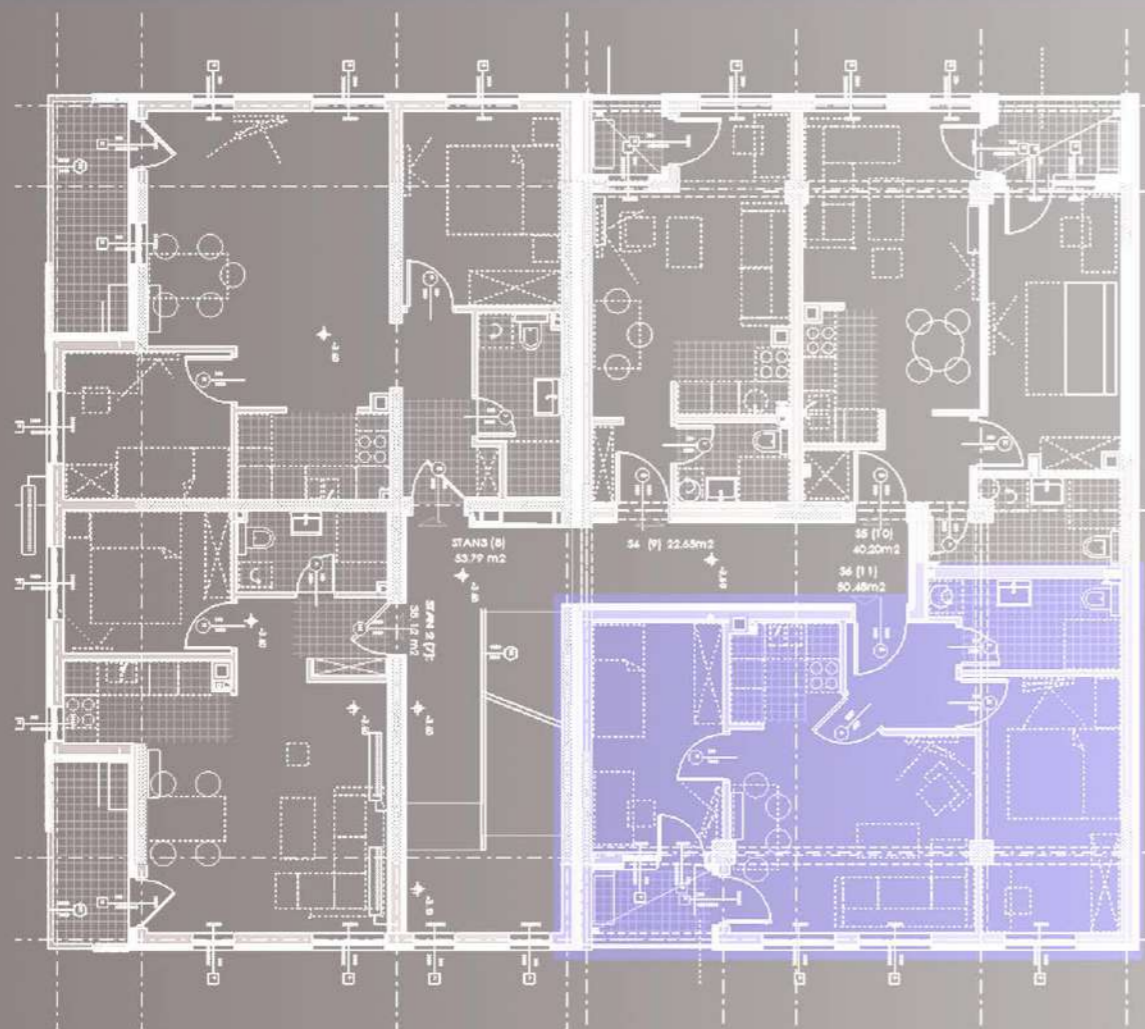
Stan S5/S10 40.69m<sup>2</sup>

1.	Hodnik	3.95
2.	Kuhinja	3.20
3.	Kupatilo	4.80
4.	Soba	12.00
5.	Dn.boravak sa trpezarijom	14.45
6.	Loda	2.29



Fotorealistični prikaz dnevnog boravka i sobe

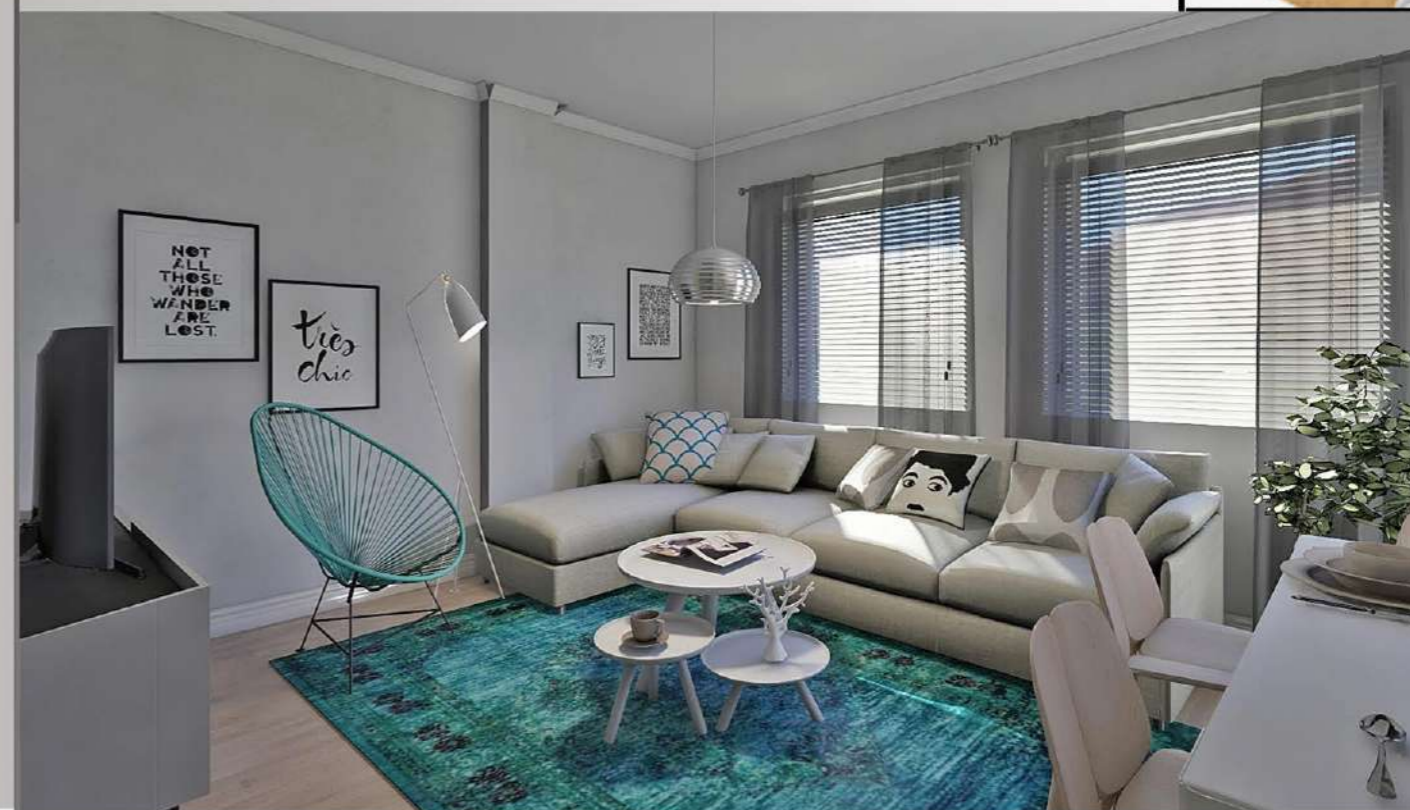
osnova I i II sprata



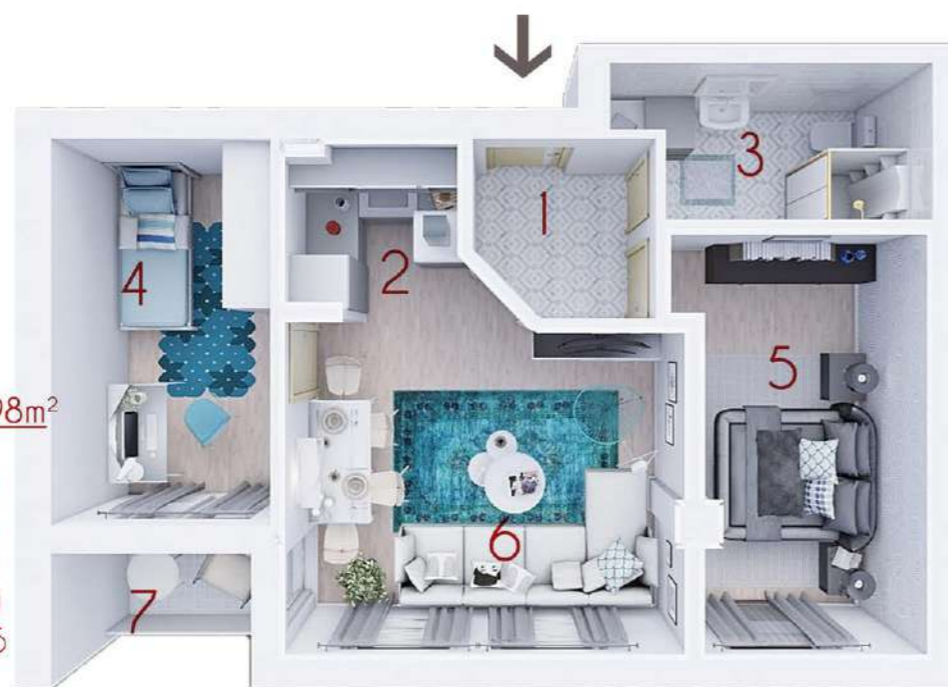
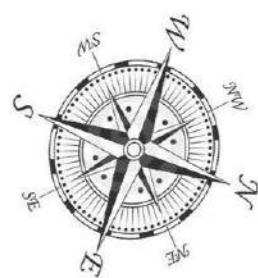
# Trosoban stan - S6/S11

I i II sprat

51.98m<sup>2</sup>



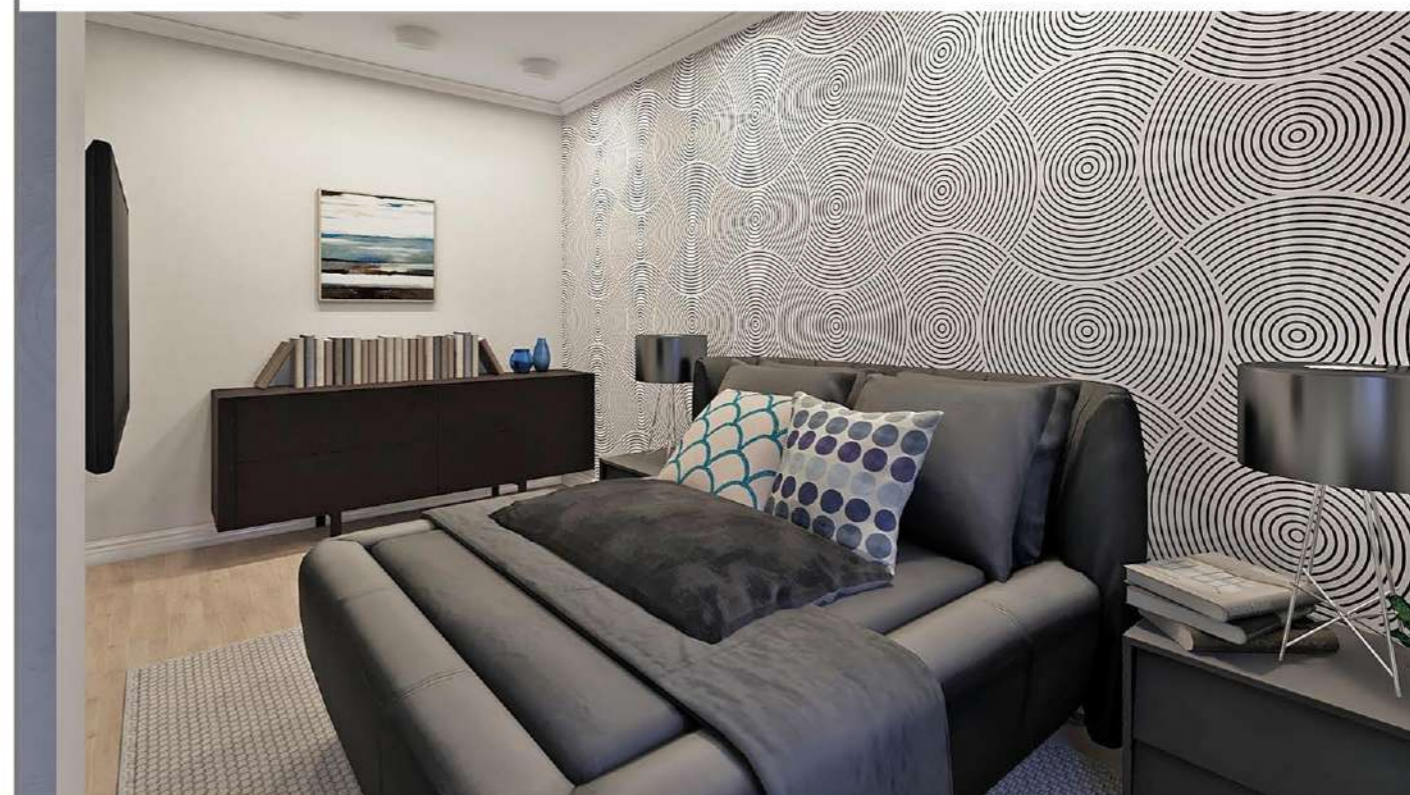
## osnova stana S6/S11



Stan S6/S11

51.98m<sup>2</sup>

- |    |                              |       |
|----|------------------------------|-------|
| 1. | Hodnik                       | 3.50  |
| 2. | Kuhinja                      | 3.45  |
| 3. | Kupatilo                     | 5.10  |
| 4. | Soba 1                       | 9.70  |
| 5. | Soba 2                       | 11.75 |
| 6. | Dn.boravak<br>sa trpezarijom | 16.15 |
| 7. | Loda                         | 2.33  |



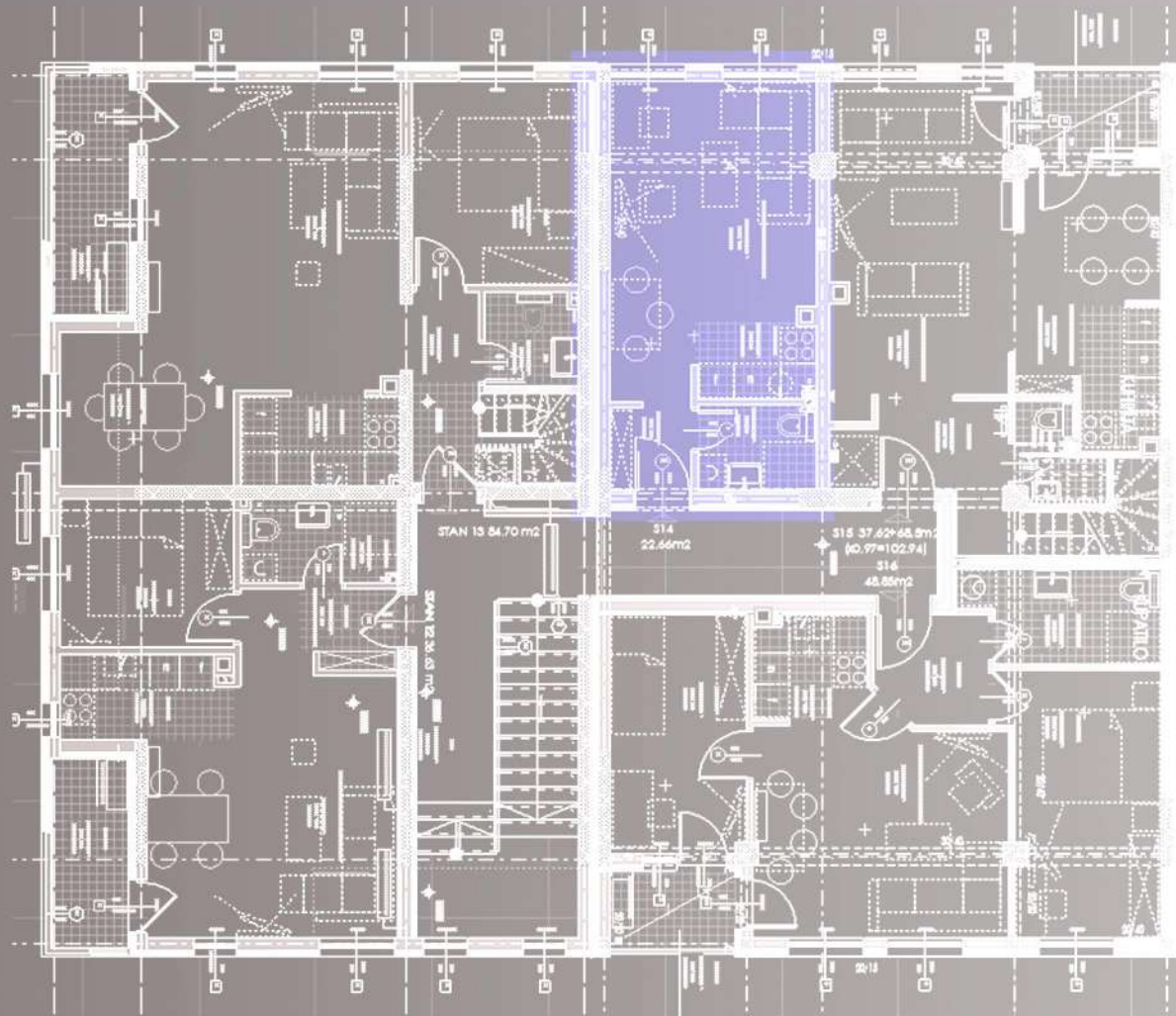
Fotorealistični prikaz dnevnog boravka  
i sobe

# Garsonjera - S14

mansarda

23.36m<sup>2</sup>

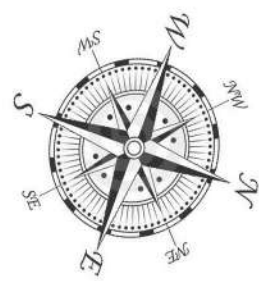
osnova mansarde



Stan S14

23.36m<sup>2</sup>

1. Hodnik 2.05
2. Kuhinja 2.75
3. Kupatilo 3.00
4. Dn.boravak sa trpezarijom 15.56



3D model stana



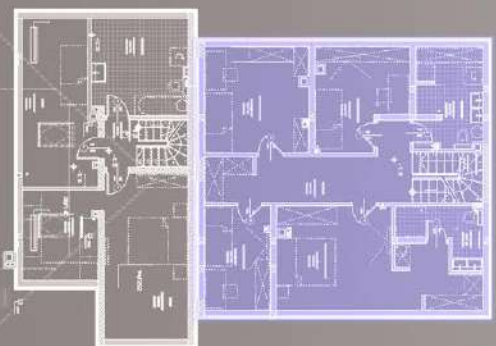
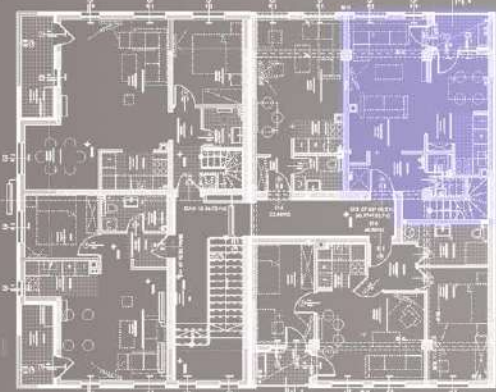
osnova stana S14



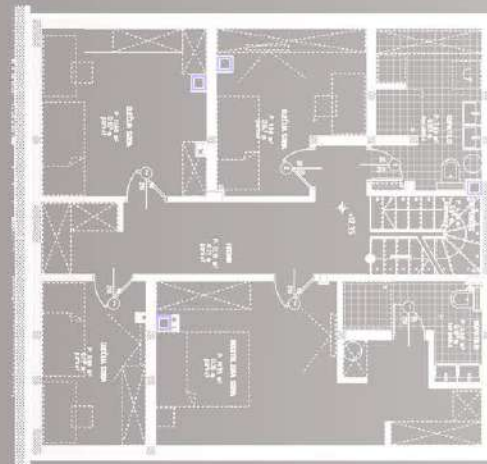
Fotorealistični prikaz dnevnog boravka i trpezarije



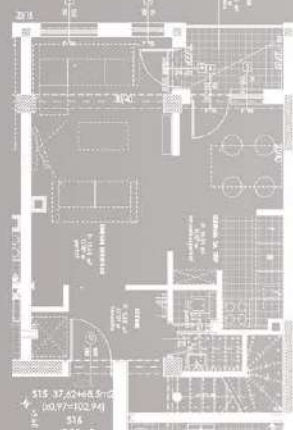
osnova mansarde i potkrovlja



osnova stana u potkrovlju



osnova stana u mansardi



# Dvoetažni stan - S15

mansarda i potkrovlje

103.94m<sup>2</sup>



osnova dvoetažnog stana S15

Stan S15		103.94m <sup>2</sup>	
1. Hodnik	5.60	8. Roditeljska soba	16.33
2. Kuhinja i trpezarija	10.95	9. Kupatilo	4.26
3. WC	2.15	10. Dječija soba 1	6.96
4. Dn. boravak	16.64	11. Dječija soba 2	9.58
5. Loda	2.29	12. Dječija soba 3	7.14
6. Stepenište	4.20	13. Kupatilo	5.69
7. Hodnik	12.15		

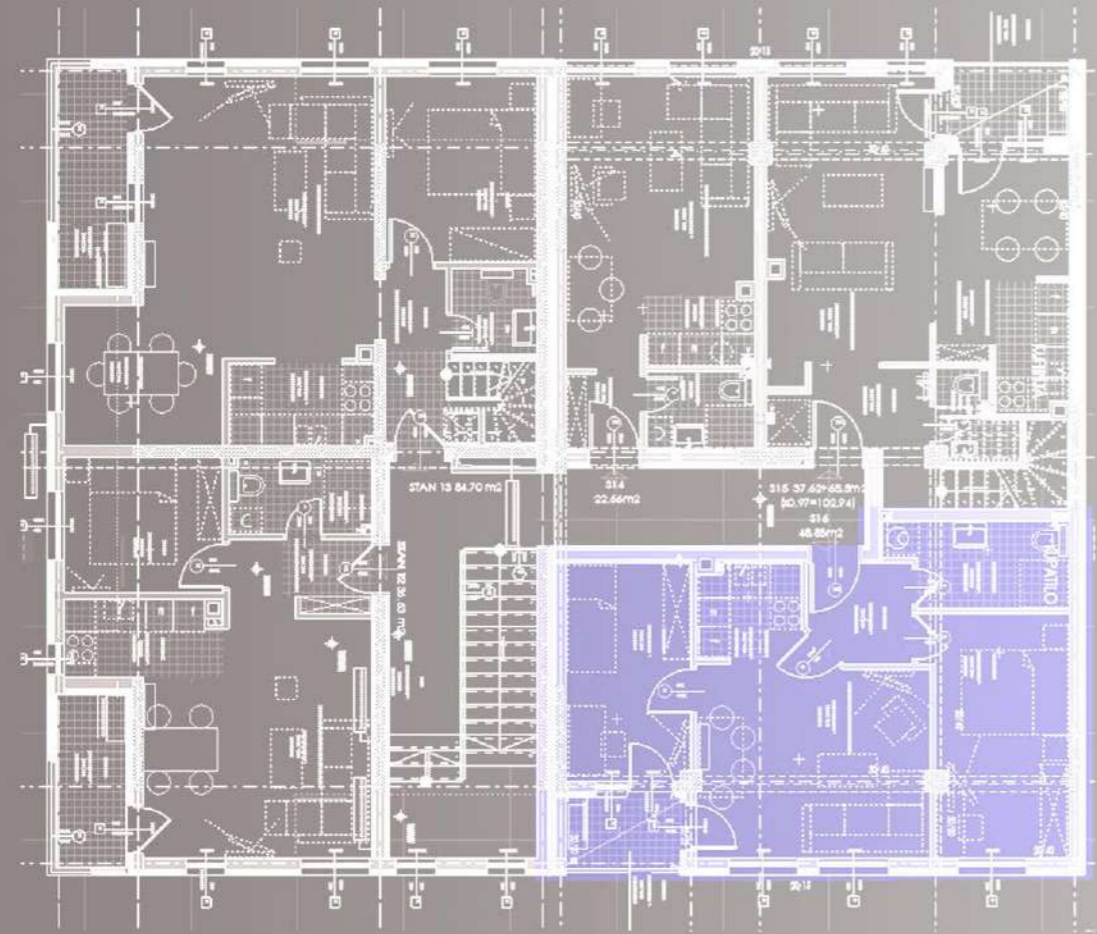
Fotorealistični prikaz dnevnog boravka, kuhinje i trpezarije

# Trosoban stan - S16

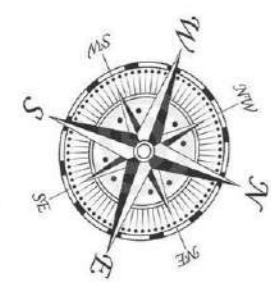
mansarda

50.34m<sup>2</sup>

osnova mansarde



## osnova stana S16



Stan S16      **50.34m<sup>2</sup>**

1.	Hodnik	3.50
2.	Kuhinja	3.45
3.	Kupatilo	5.10
4.	Soba 1	9.70
5.	Soba 2	11.16
6.	Dn.boravak sa trpezarijom	15.10
7.	Loda	2.33



Fotorealistični prikaz dnevnog boravka i kuhinje