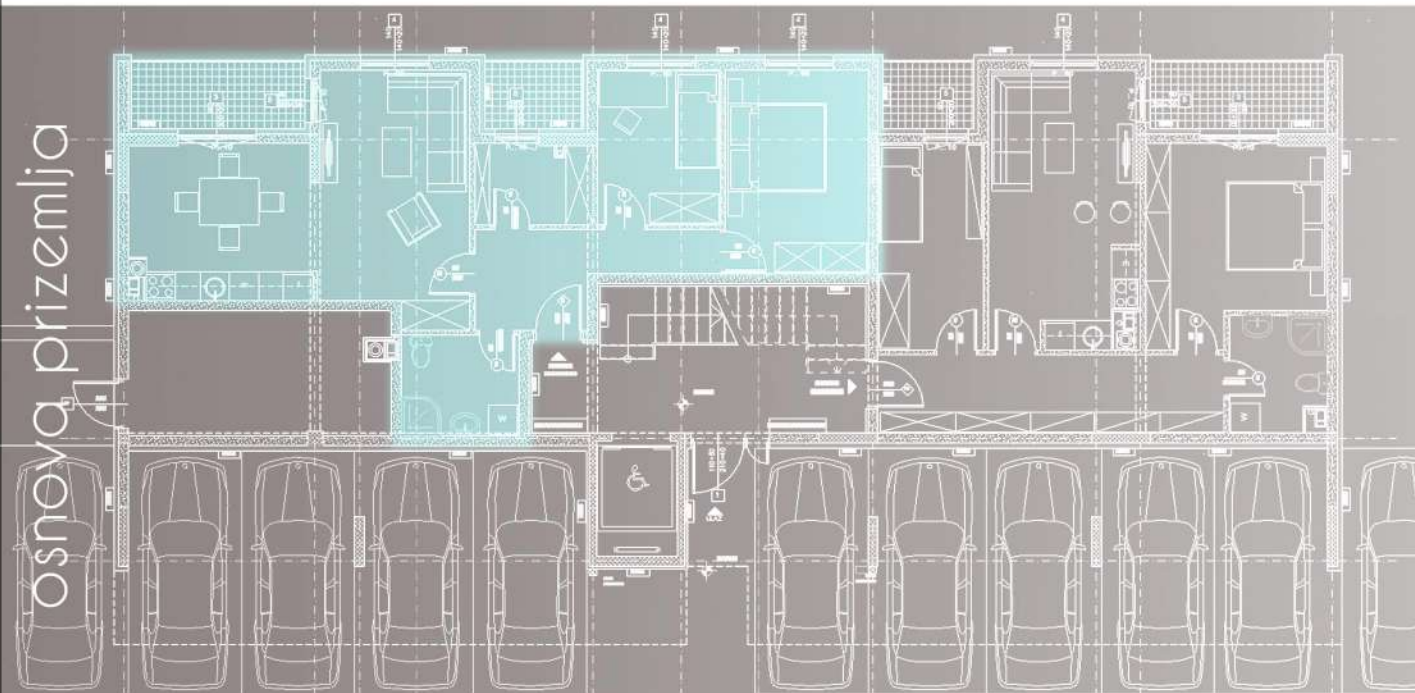


KATALOG STANOVA

Višeporodnični,
stambeno - poslovni
objekat na Starčevci

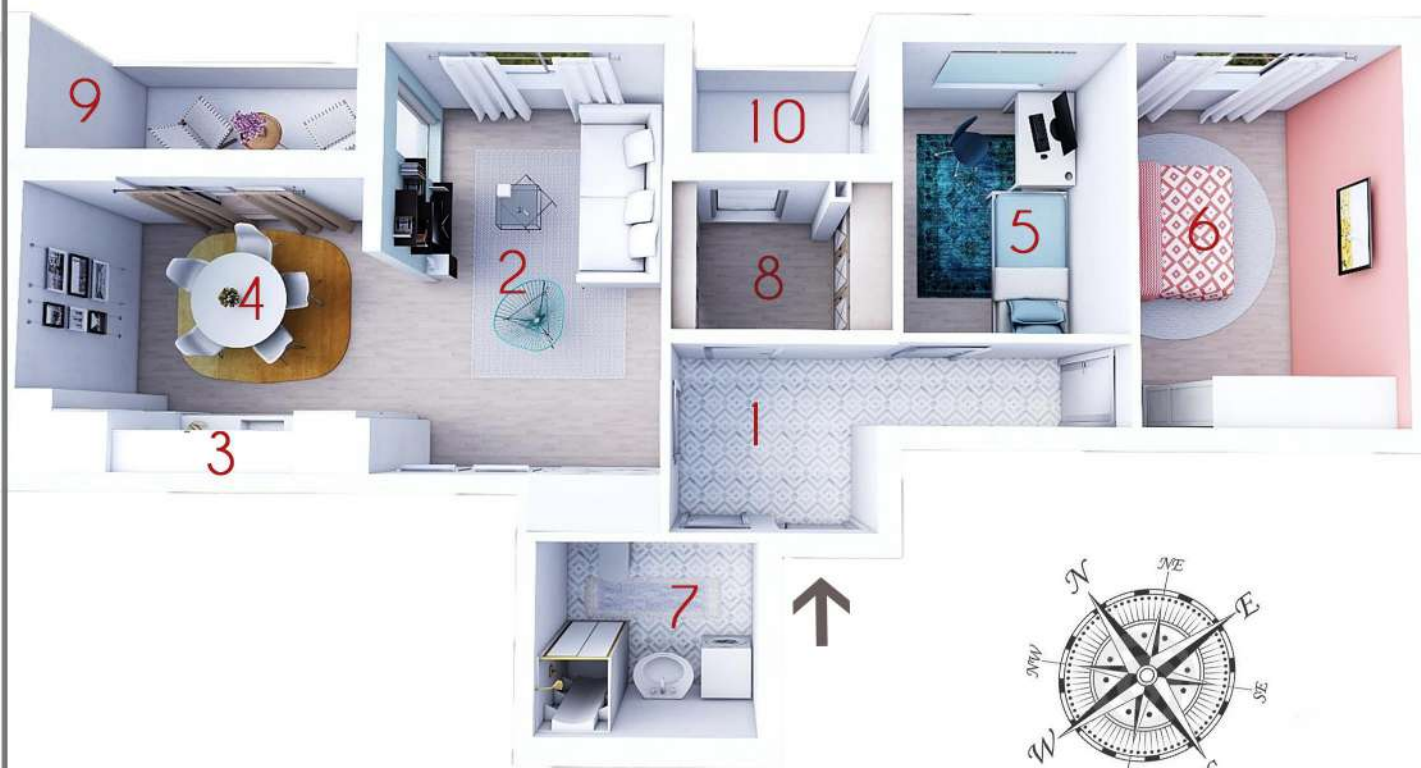


osnova prizemlja



Trosoban stan - S1 prizemlje

68.73m²

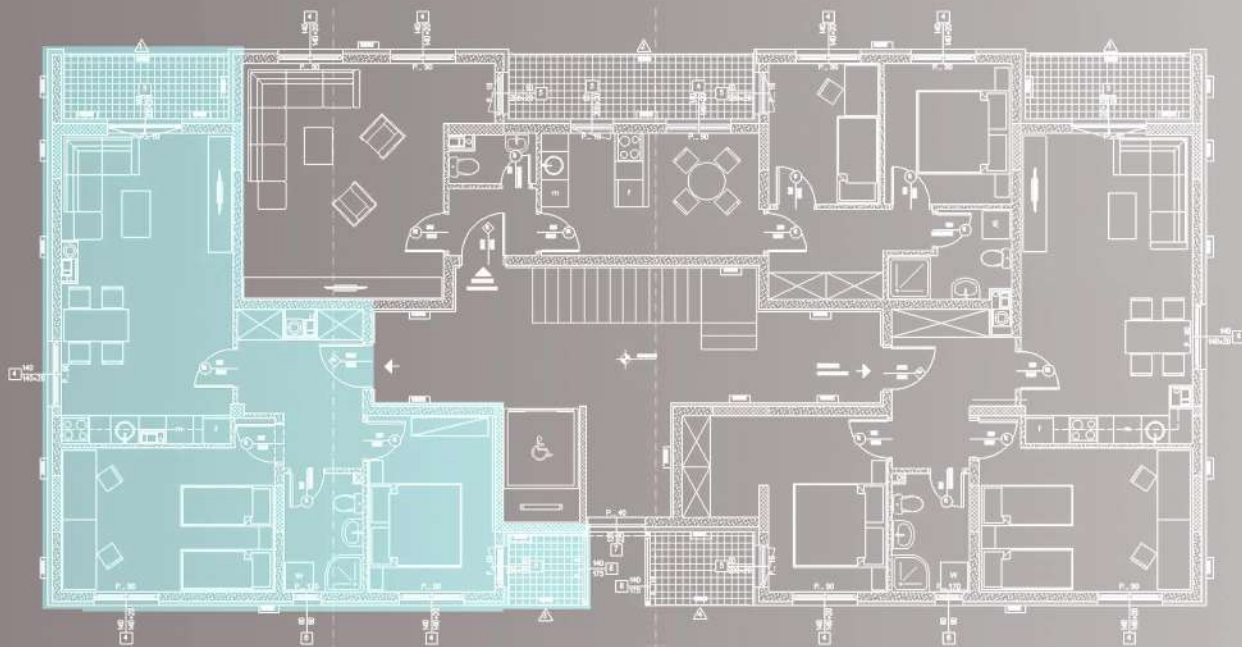


Stan S1		68.73m ²
1.	Ulaz	7.14
2.	Dnevna soba	15.48
3.	Kuhinja	3.02
4.	Trpezarija	8.63
5.	Soba	7.88
6.	Spavaća soba	12.04
7.	Kupatilo	4.91
8.	Carderober	3.86
9.	Loda	3.72
10.	Loda	2.10

osnova stana S1

Fotorealistični prikaz dnevnog boravka, trpezarije i kuhinje

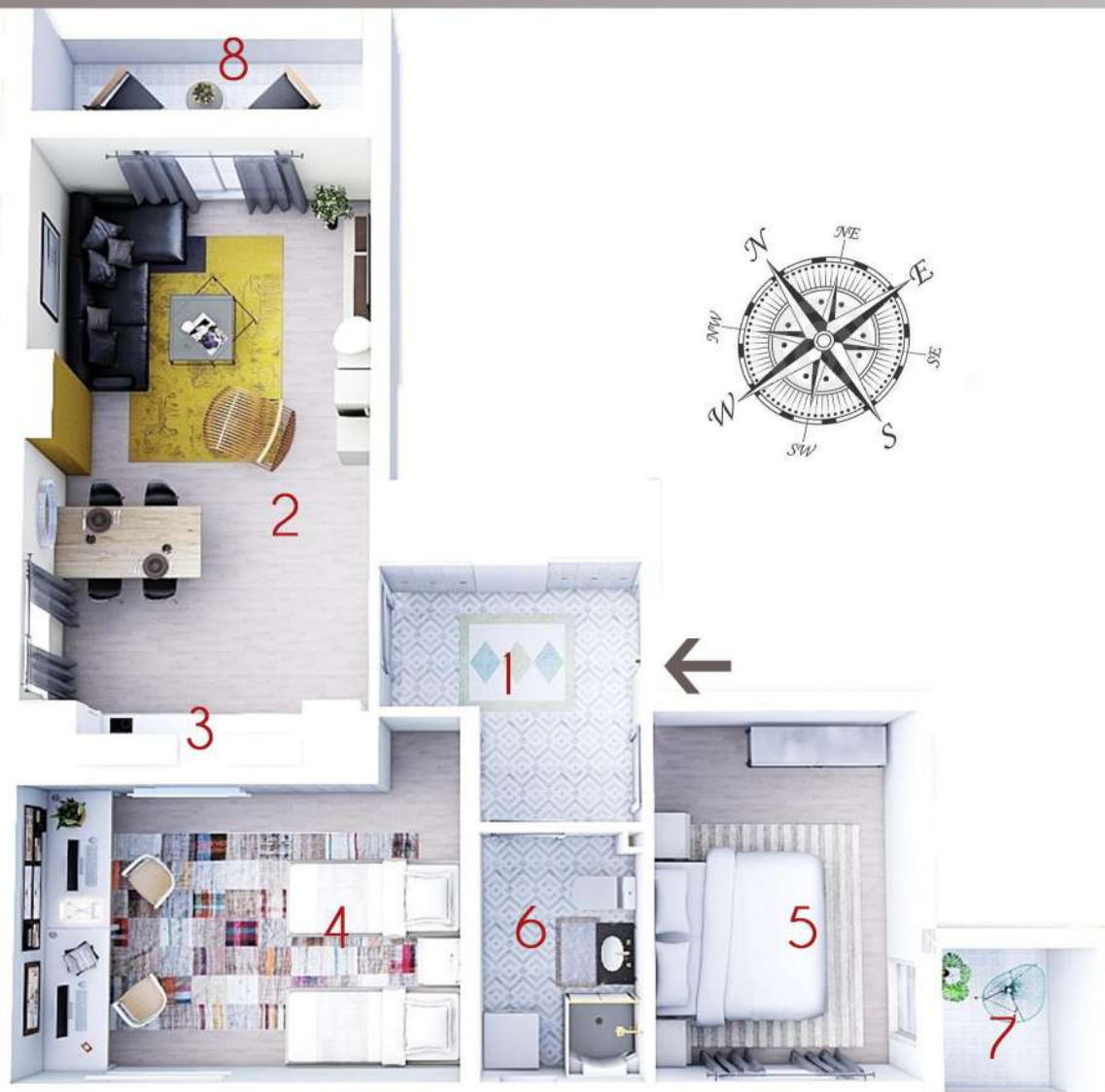
osnova tipske etaže



Trosoban stan - S3 / S6

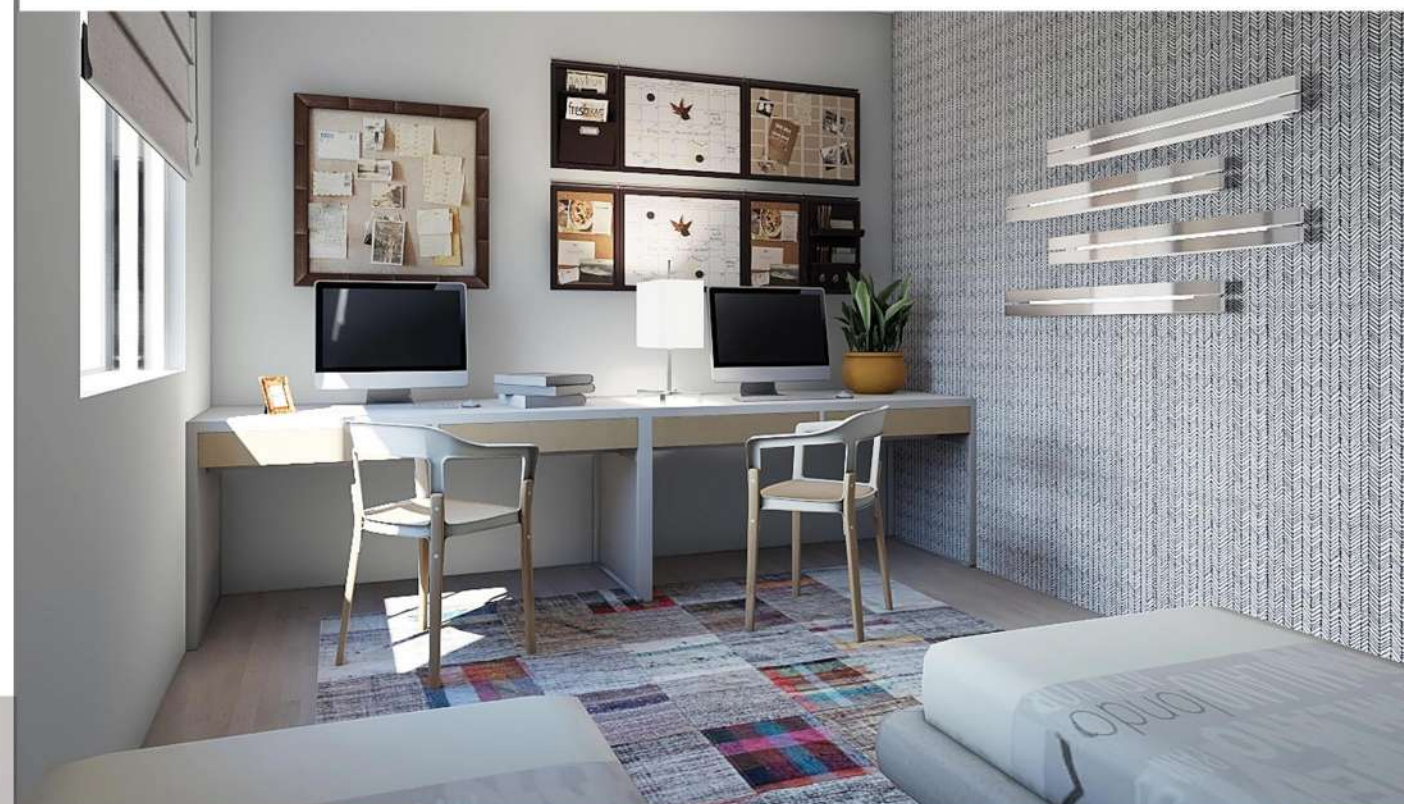
I i II sprat

66.15m²



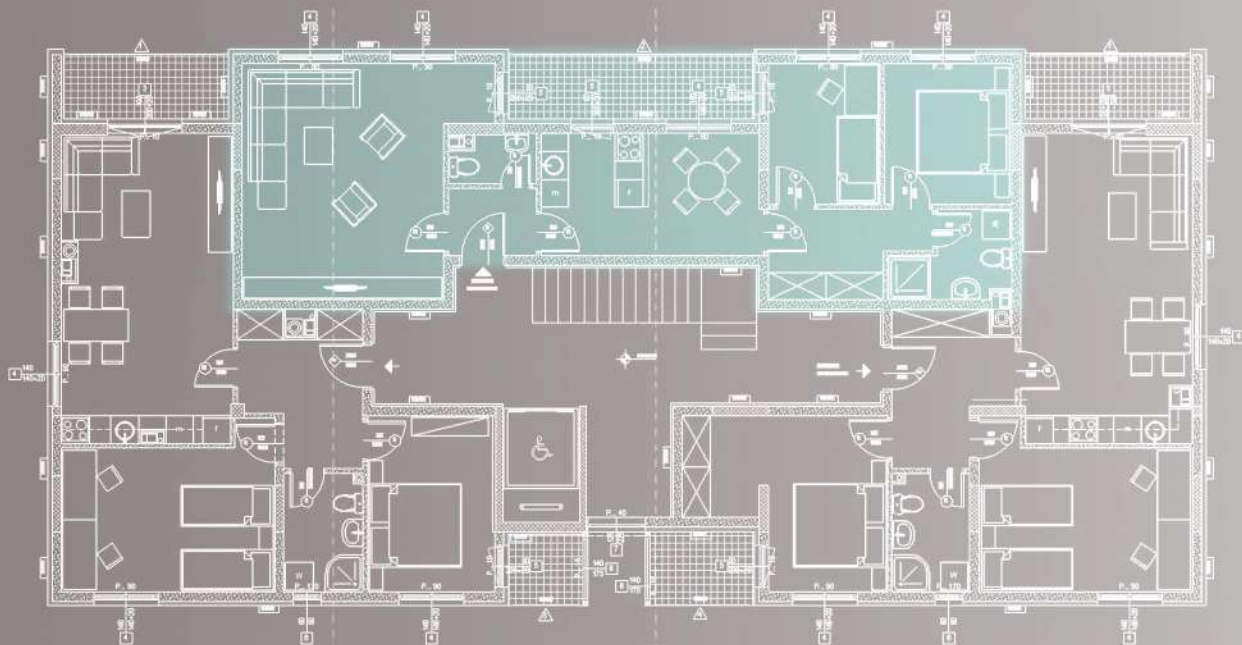
Stan S3/S6		66.15m ²
1.	Ulaz	7.59
2.	Dnevna soba/Trpezarija	21.26
3.	Kuhinja	2.93
4.	Soba	14.81
5.	Spavaća soba	10.31
6.	Kupatilo	4.29
7.	Balkon	1.24
8.	Lođa	3.72

osnova stana S3/S6



Fotorealistični prikaz dnevnog boravka, trpezarije, i dječije sobe

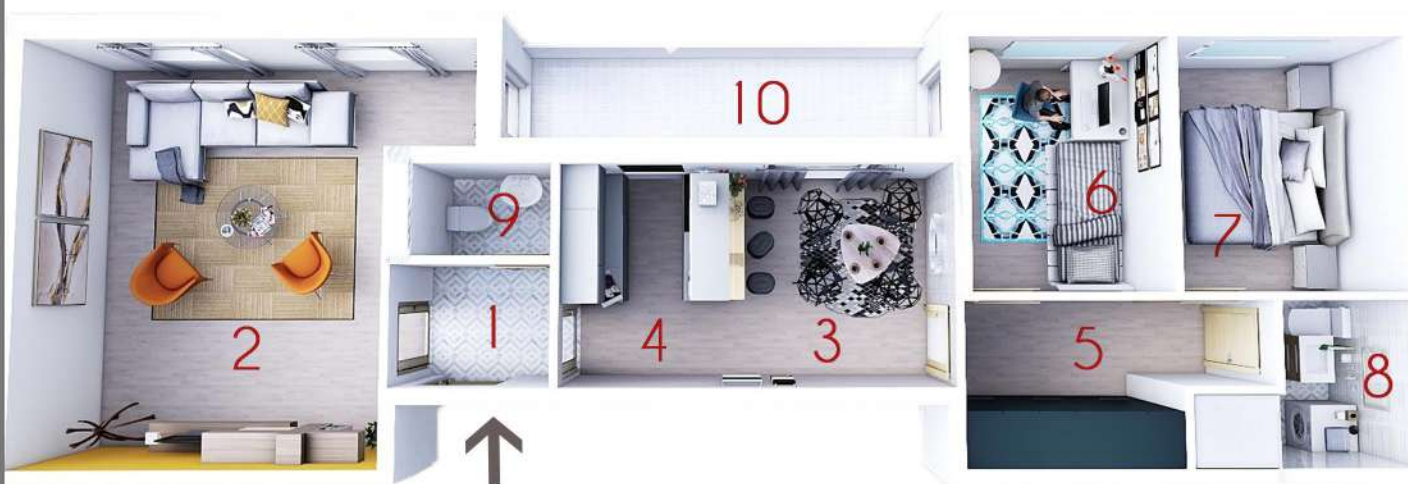
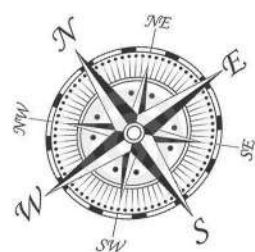
osnova tipske etaže



Trosoban stan - S4 / S7

I i II sprat

71.70m²



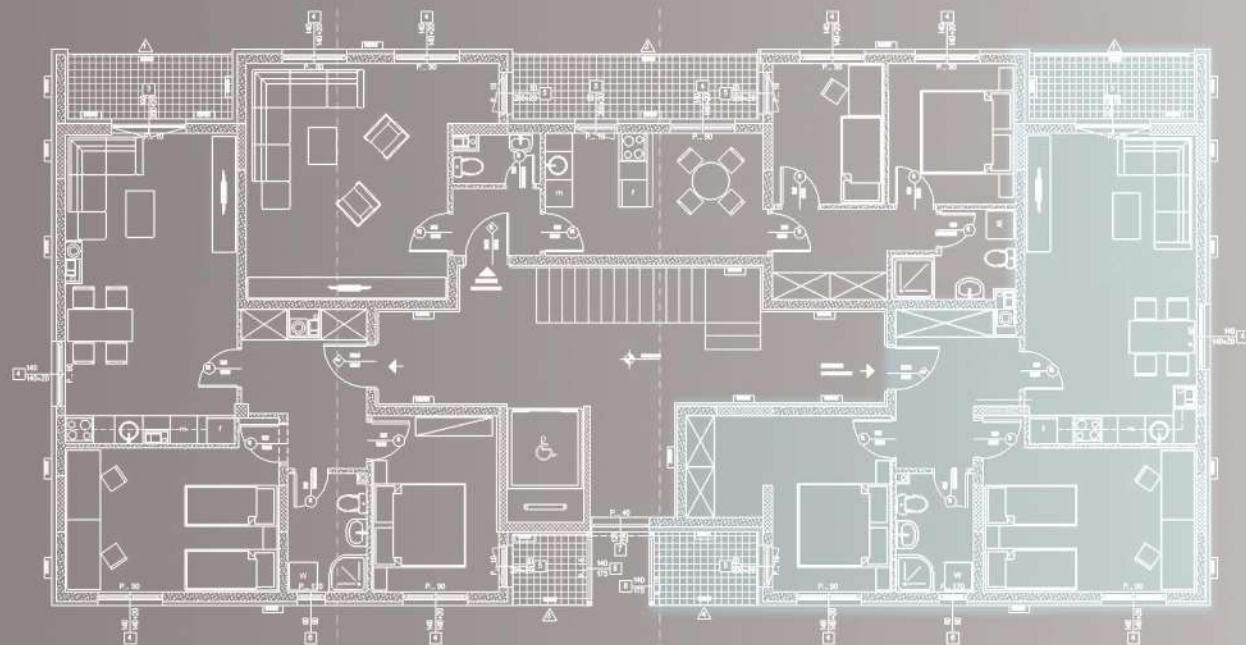
Stan S4/S7		71.70m ²
1.	Ulaz	2.76
2.	Dnevna soba	23.63
3.	Trpezarija	8.75
4.	Kuhinja	3.52
5.	Degažman	5.81
6.	Soba	7.33
7.	Spavaća soba	8.38
8.	Kupatilo	4.03
9.	WC	1.84
10.	Loda	5.65

osnova stana S4/S7



Fotorealistični prikaz dnevnog boravka, trpezarije i kuhinje

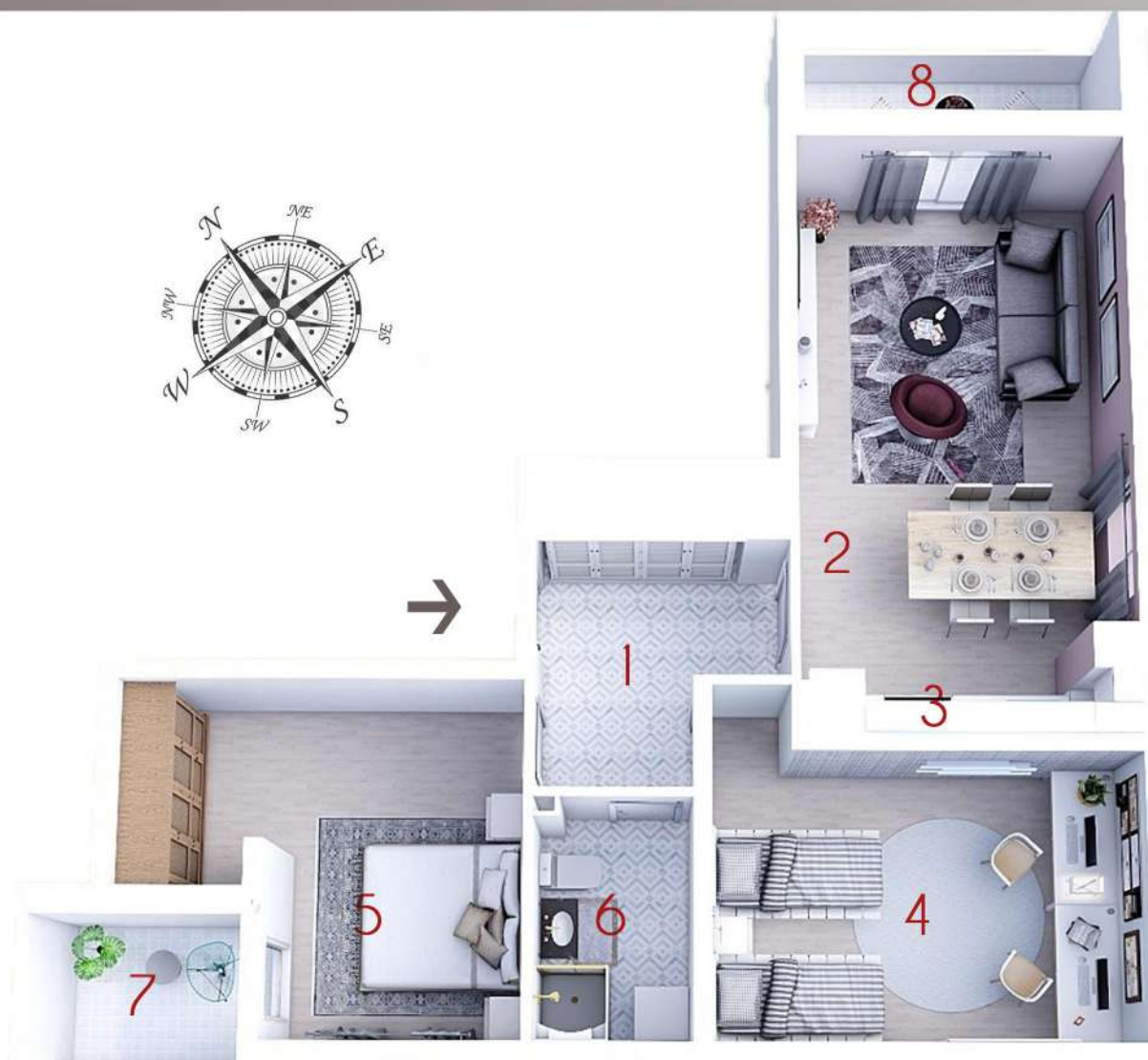
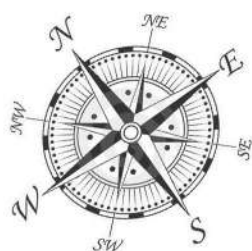
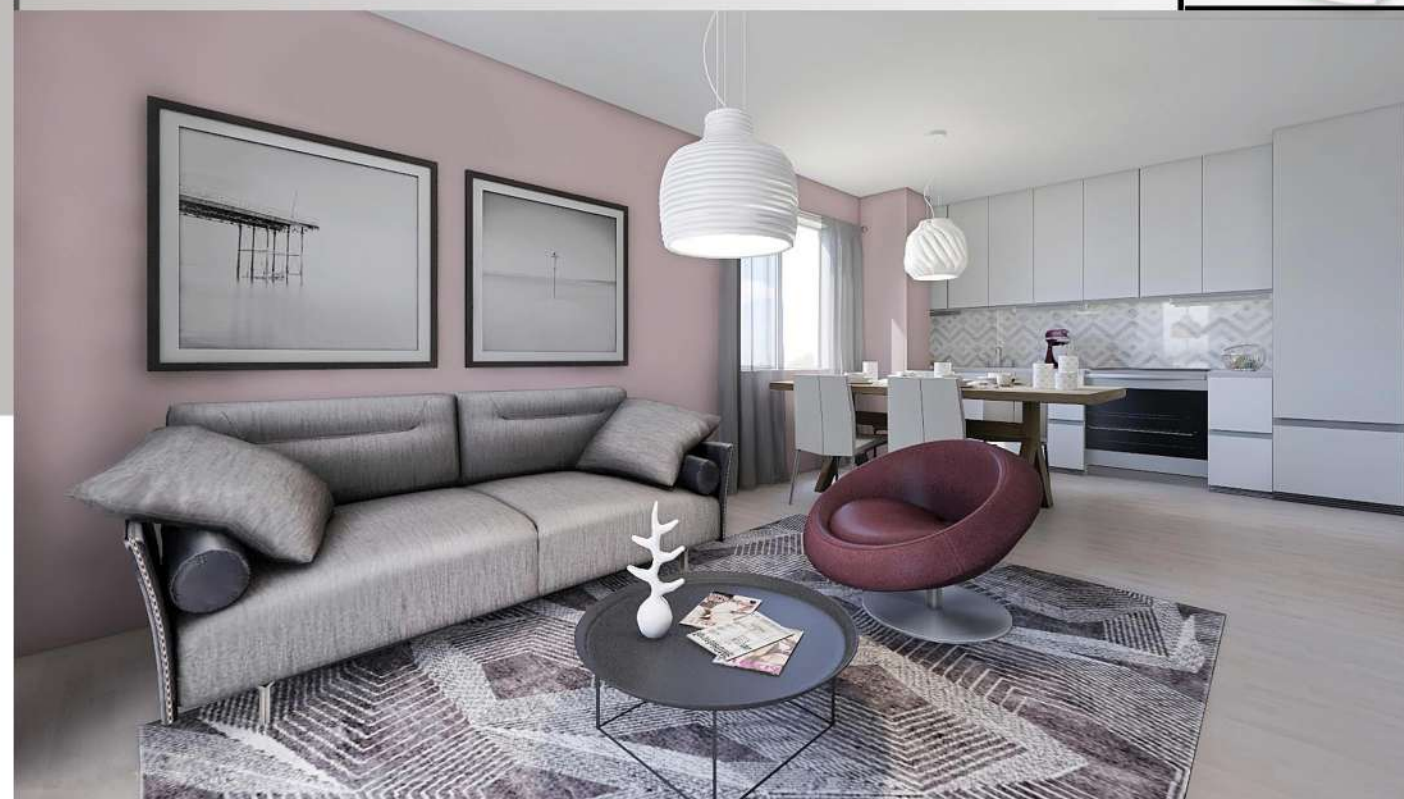
osnova tipske etaže



Trosoban stan - S5 / S8

I i II sprat

69.74m²

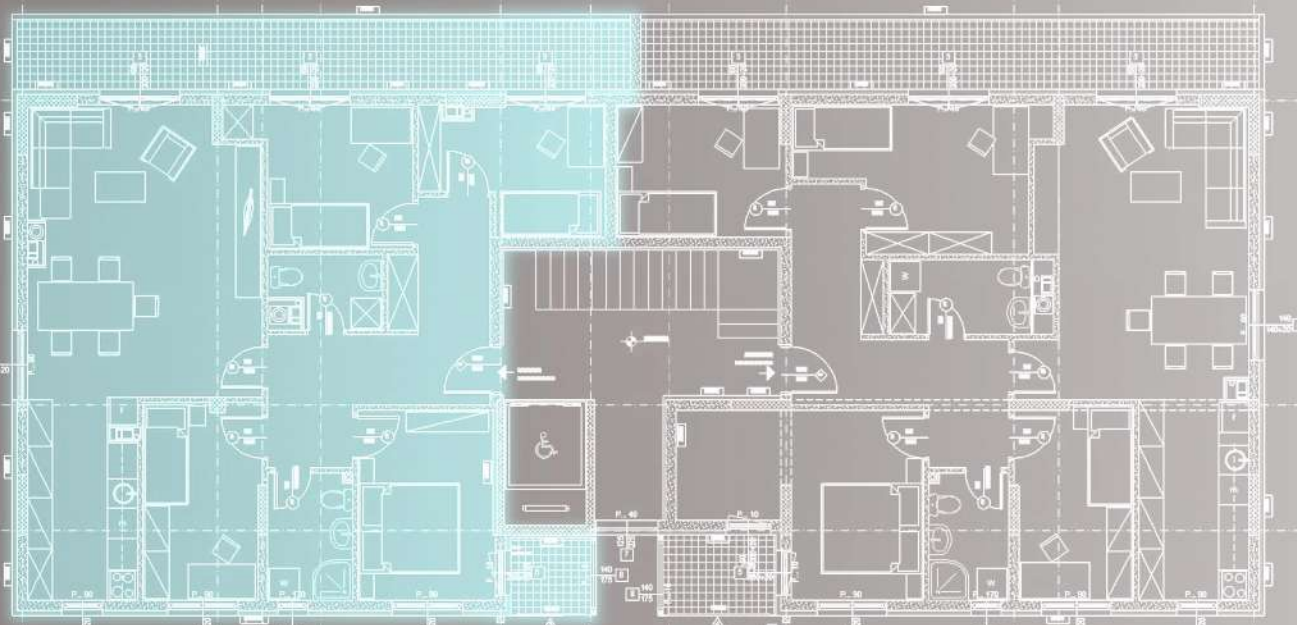


Stan S5/S8		69.74m ²
1.	Ulaz	7.53
2.	Dnevna soba/Trpezarija	21.56
3.	Kuhinja	2.86
4.	Soba	14.89
5.	Spavaća soba	13.17
6.	Kupatilo	4.21
7.	Balkon	1.80
8.	Lođa	3.72

osnova stana S5/S8

Fotorealistični prikaz dnevnog boravka, trpezarije i kuhinje

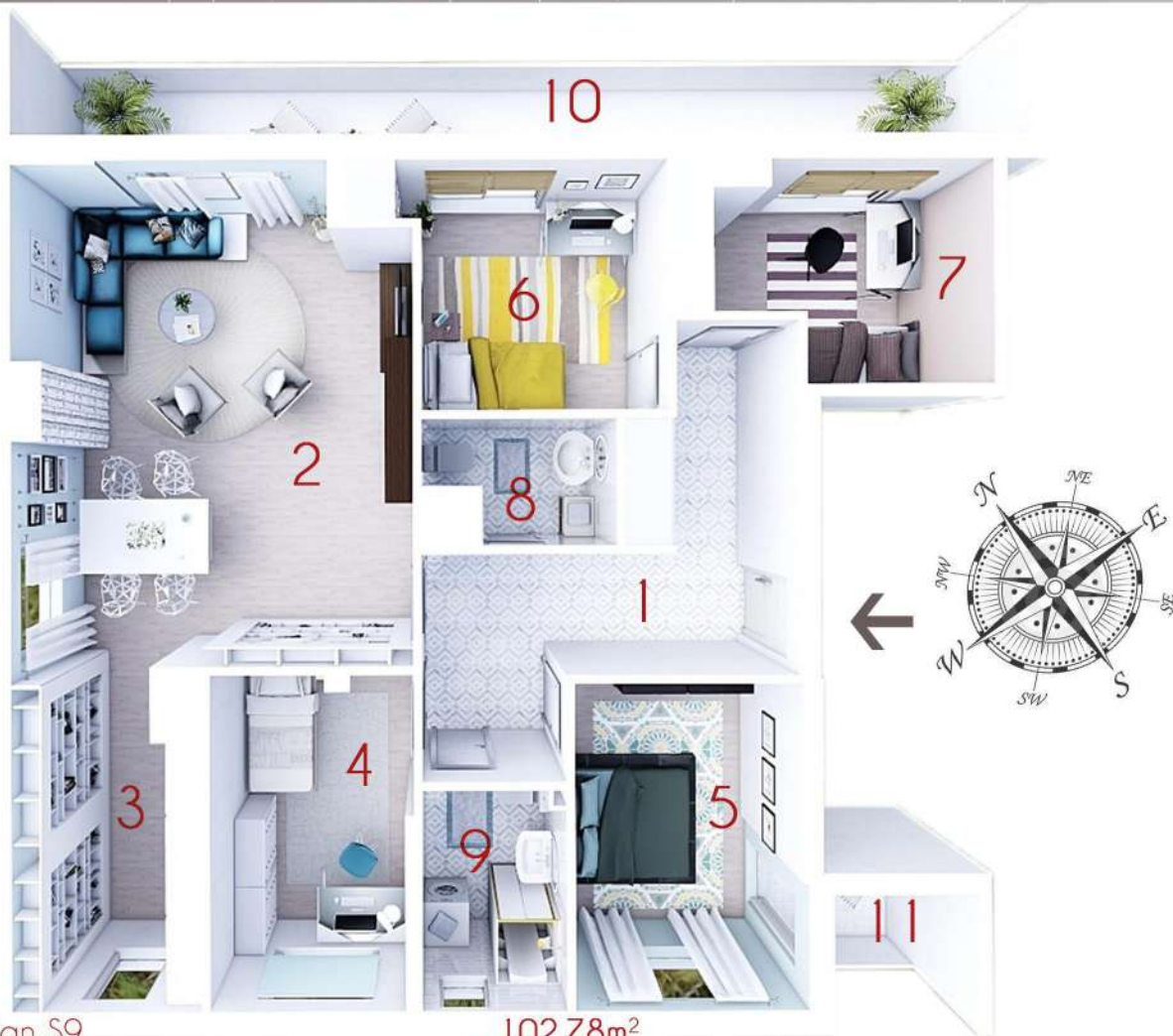
osnova povučene etaže



Četvorosoban stan - S9

povučena etaža

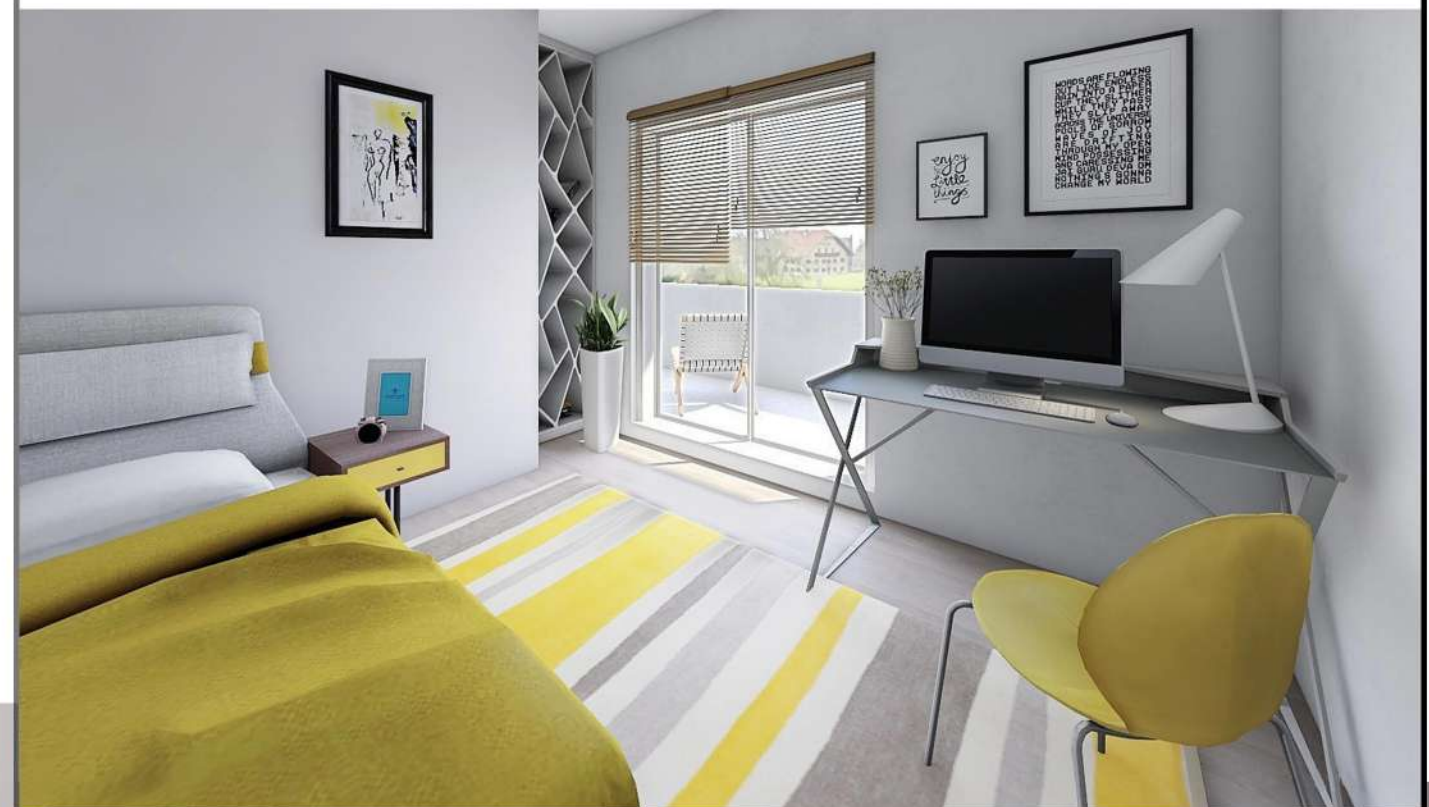
102.78m²



Stan S9 102.78m²

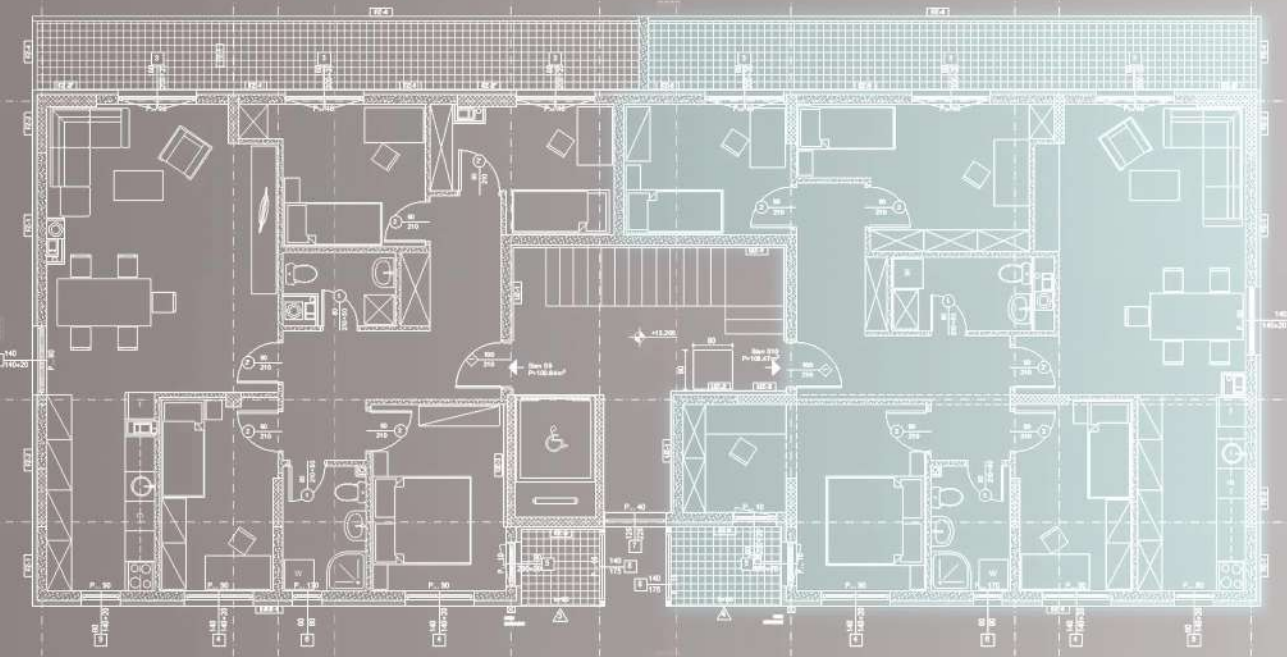
1.	Ulaz	13.24
2.	Dnevna soba/Trpezarija	26.31
3.	Kuhinja	8.70
4.	Soba 1	9.19
5.	Spavaća soba	10.31
6.	Soba 2	9.04
7.	Soba 3	8.29
8.	WC	2.98
9.	Kupatilo	4.29
10.	Balkon	8.57
11.	Loda	3.72

osnova stana S9



Fotorealistični prikaz dnevnog boravka, i dječije sobe

osnova povučene etaže



Četvorosoban stan - S10 | 110.64m²

povučena etaža



osnova stana S10

Stan S9		110.64m ²			
1.	Ulaz	12.69	7.	Spavaća soba	10.37
2.	Dnevna soba/Trpezarija	24.24	8.	Radna soba	4.62
3.	Kuhinja	8.78	9.	Toalet	4.26
4.	Soba 1	9.02	10.	Kupatilo	4.04
5.	Soba 2	8.95	11.	Balkon	8.64
6.	Soba 3	12.33	12.	Loda	2.70



Fotorealistični prikaz dnevnog boravka, i radne sobe